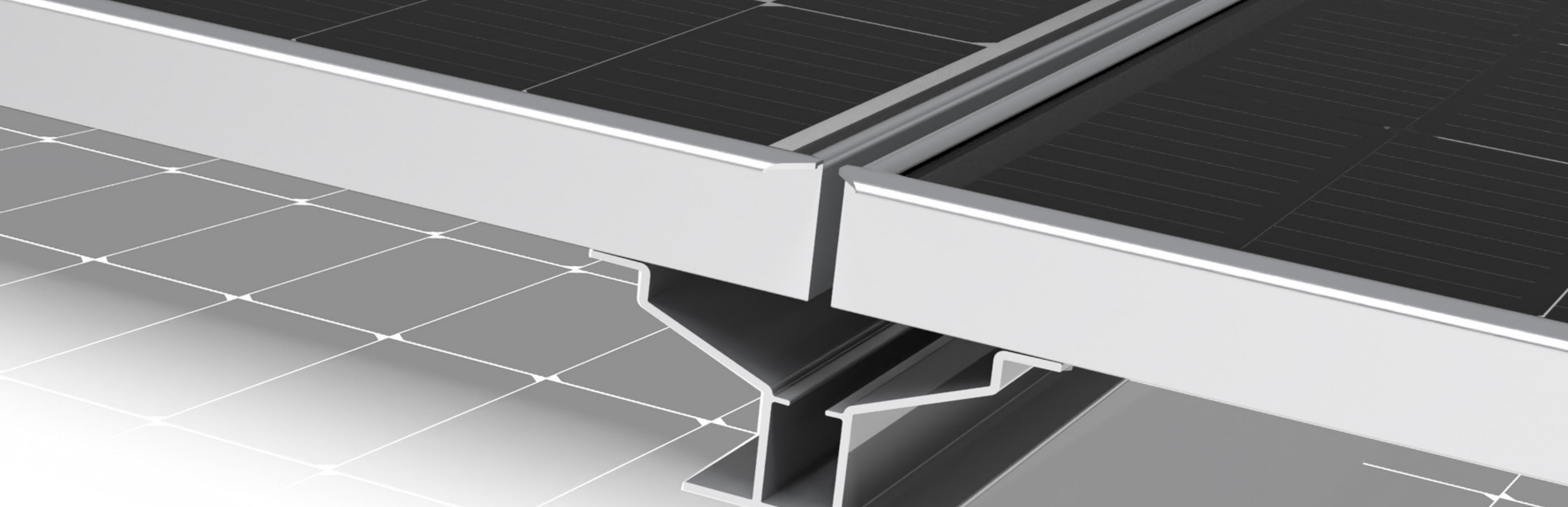


ClearSpan Module System

Waterproof module system optimized for parking deck and carport applications



System Overview

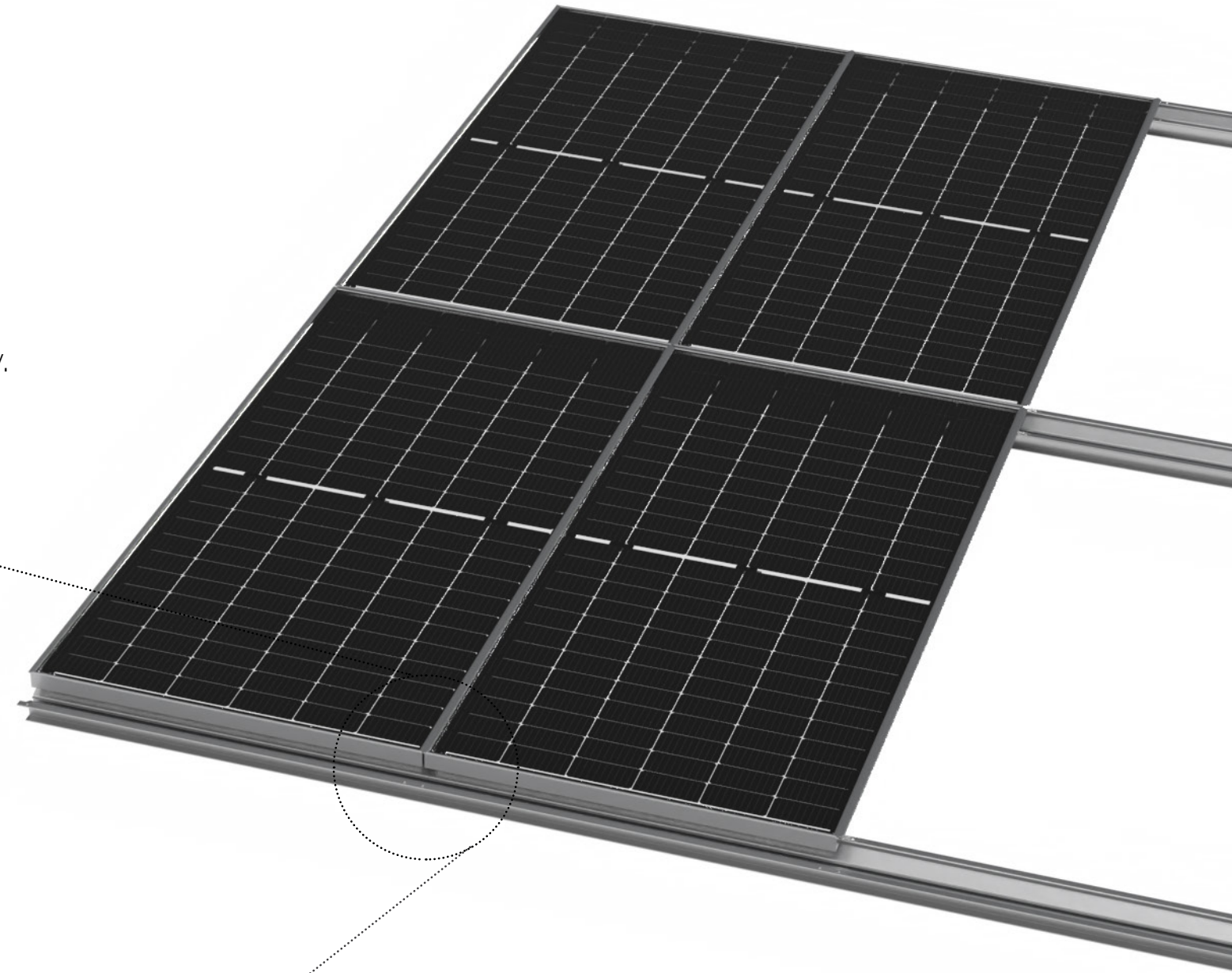
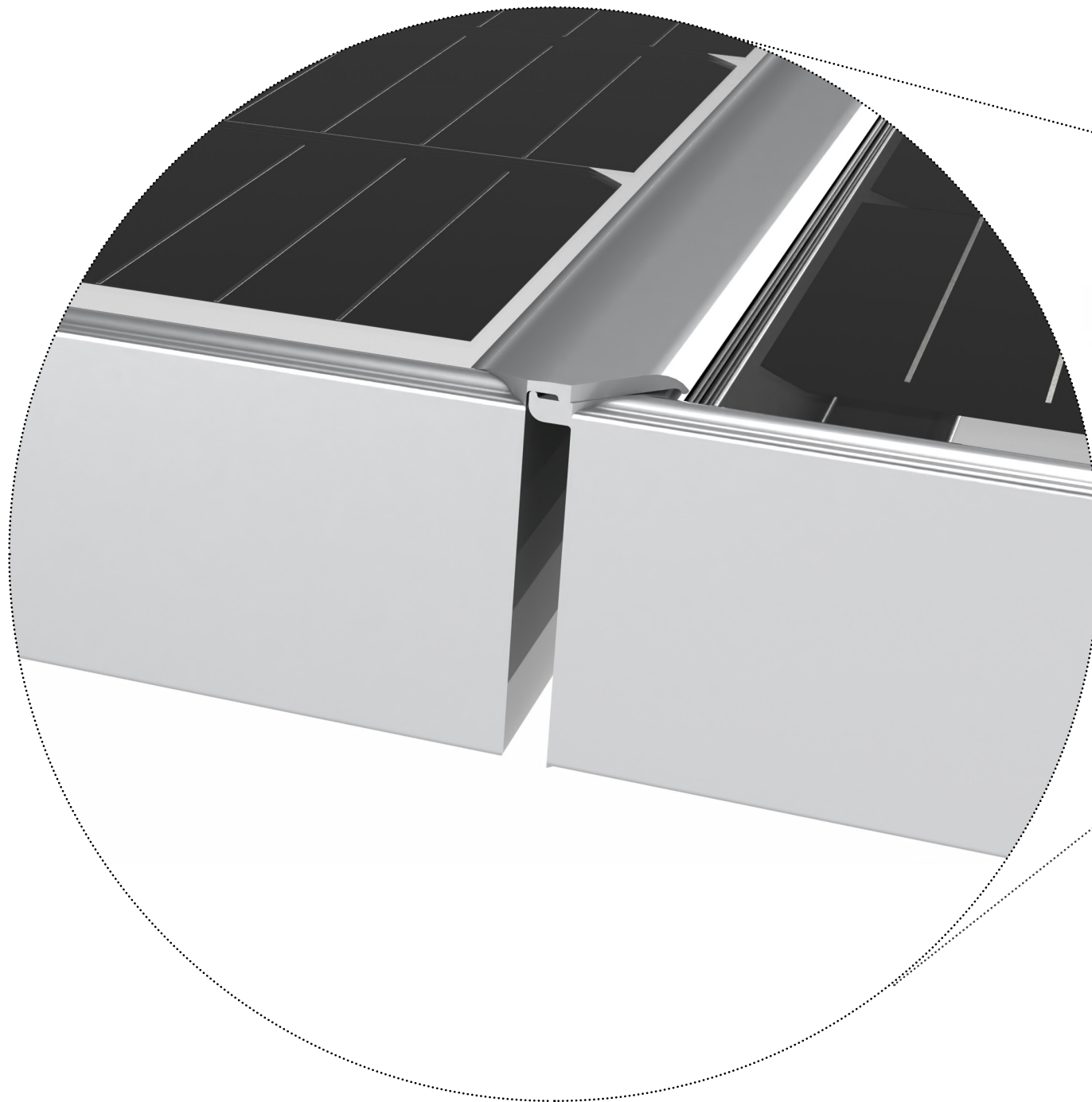
The **Clear**Span Module System was designed from the ground up to be the best solar module solution for parking deck and carport applications. The unique shingled frames of our **CSX** modules with the **Clear**Span Rail create an ultra durable waterproof array that is built to last.

- Waterproof
- Integrated gutter
- Integrated wireway
- Concealed conductors
- Bifacial modules
- Ultra durable glass glass construction

Module Overview

The backbone of the **ClearSpan** Module system is the unique shingled frames of the **CSX** Modules and the **ClearSpan** Rail which is a gutter, wireway and mounting rail in one super clean aluminum profile. The entire system is fastened using flange nuts and bolts through predrilled holes in all components for super fast and secure installation.

ClearSpan was designed, engineered, and manufactured to perform all day, every day.

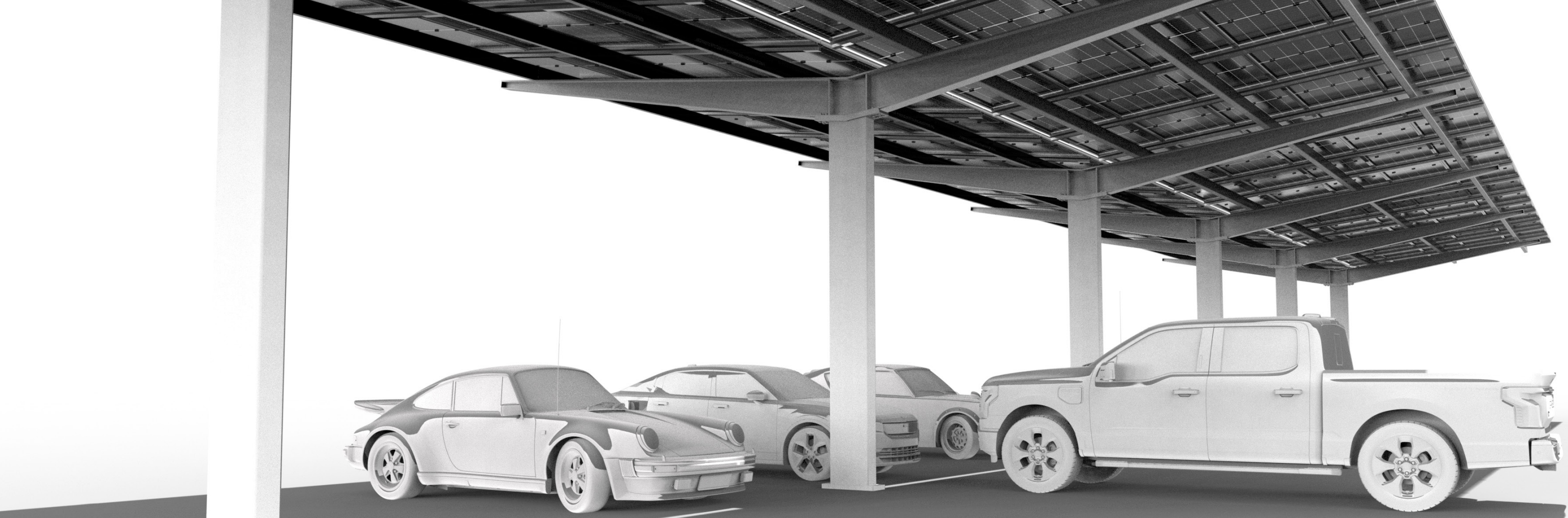




Parking Deck

Parking decks are the low hanging fruit for overhead solar applications. They are ideal locations for solar since they make the most out of valuable real estate, do not require costly foundations and convert the top level of a parking deck into an energy producing asset and with the **ClearSpan** Module System provide users waterproof, covered parking.

- Integrated gutters
- Surface mounted LED lighting
- Galvanized steel finish



Carport

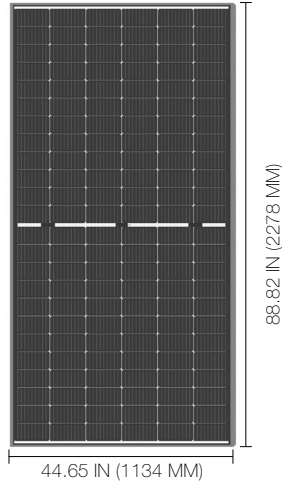
The **ClearSpan** Module System is the perfect solution to create super clean, shady, waterproof solar carports. If you are looking for a streamlined solution that is built to stand the test of time.

- Integrated gutters
- Surface mounted LED lighting
- Galvanized steel finish

Module Specifications



TEMPERATURE COEFFICIENTS	
NOMINAL OPERATING CELL TEMPERATURE (NOCT)	45±2°C
POWER TEMPERATURE COEFFICIENT (PMPP)	- 0.30% / °C
VOLTAGE TEMPERATURE COEFFICIENT (VOC)	- 0.26% / °C
CURRENT TEMPERATURE COEFFICIENT (ISC)	+ 0.046% / °C



CSX 590
Highest power output

POWER	590W	585W	580W
PEAK POWER VOLTAGE (VMP)	43.11 V	42.92 V	42.7 V
MAXIMUM POWER CURRENT (IMP)	13.69 A	13.65 A	13.6 A
OPEN CIRCUIT VOLTAGE (VOC)	51.79 V	51.65 V	51.44 V
SHORT CIRCUIT CURRENT (ISC)	14.49 A	14.44 A	14.37 A
MODULE EFFICIENCY	22.84%	22.65%	22.45%
CELLS	144		
CELL LAYOUT	12 X 12		
OPERATING TEMPERATURE	- 40°C TO + 85°C		
MAXIMUM SYSTEM VOLTAGE	DC 1500V		
MAXIMUM TYPE FUSE RATING	30 A		
POWER TOLERANCE	- 0/+5W		
SOLAR CELL	MONOCRYSTALLINE BIFACIAL 7.1" X 3.5" (182 MM X 91 MM)		
MODULE DIMENSIONS	88.82 IN X 44.65 IN X 1.38 IN (2278 MM X 1134 MM X 35 MM)		
MODULE AREA	27.54 FT ² (2.58M ²)		
FRONT GLASS	AR-COATING SEMI-TOUGHENED GLASS, 2.0MM		
BACK GLASS	GLAZED & SEMI-TOUGHENED GLASS, 2.0MM		
MODULE WEIGHT	72.09 LBS (32.7 KG)		
FRAME	ANODIZED ALUMINIUM ALLOY		
STATIC LOAD	+5400/-2400 PA, +113/-50 PSF		
OUTPUT CABLES	POTRAIT: 500MM, MM2 OR 12AGW		
FIRE RATING	CLASS C FOR IEC AND TYPE 29 FOR US		
CERTIFICATIONS	UL 61730, CSA 61730, IEC 61215, IEC 61730		
WARRANTY	12 YEAR PRODUCT WARRANTY / 30 YEAR LINEAR PERFORMANCE WARRANTY		



WARRANTY

