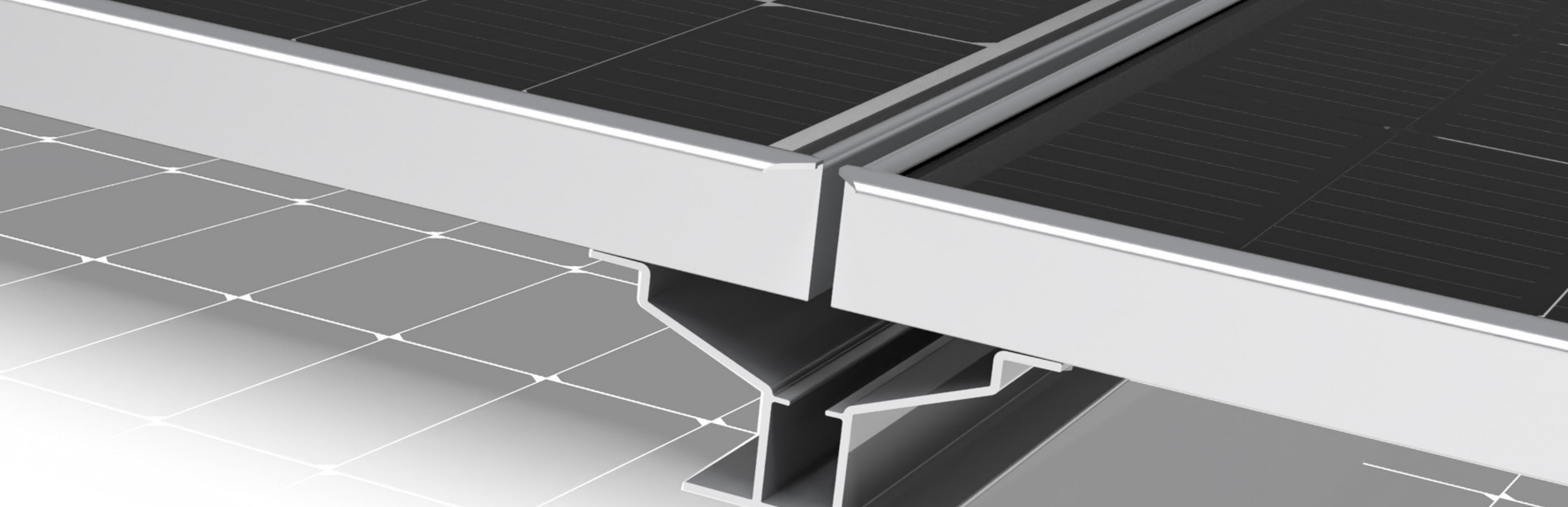


# ClearSpan Module System

Waterproof module system optimized for parking deck and carport applications



## System Overview

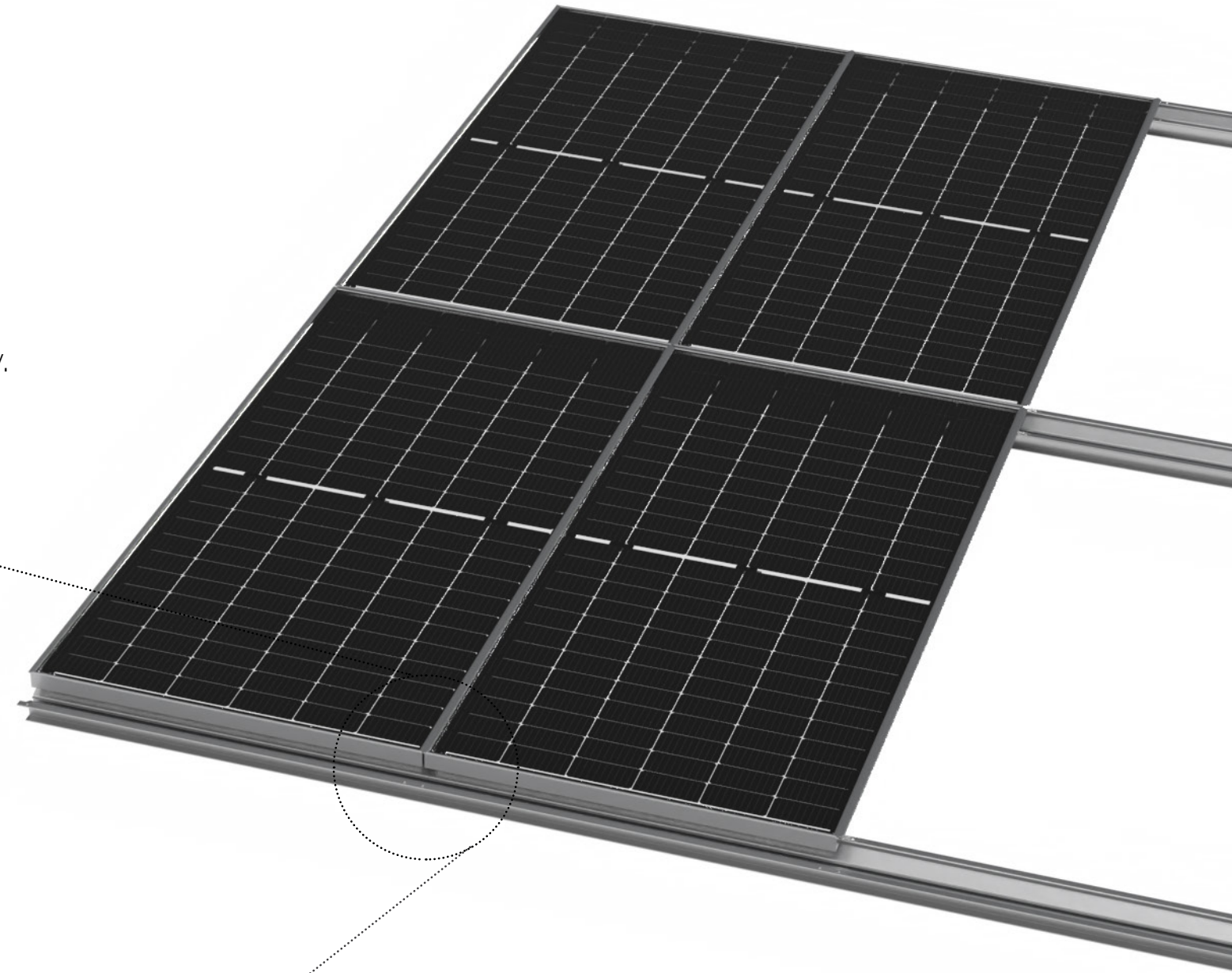
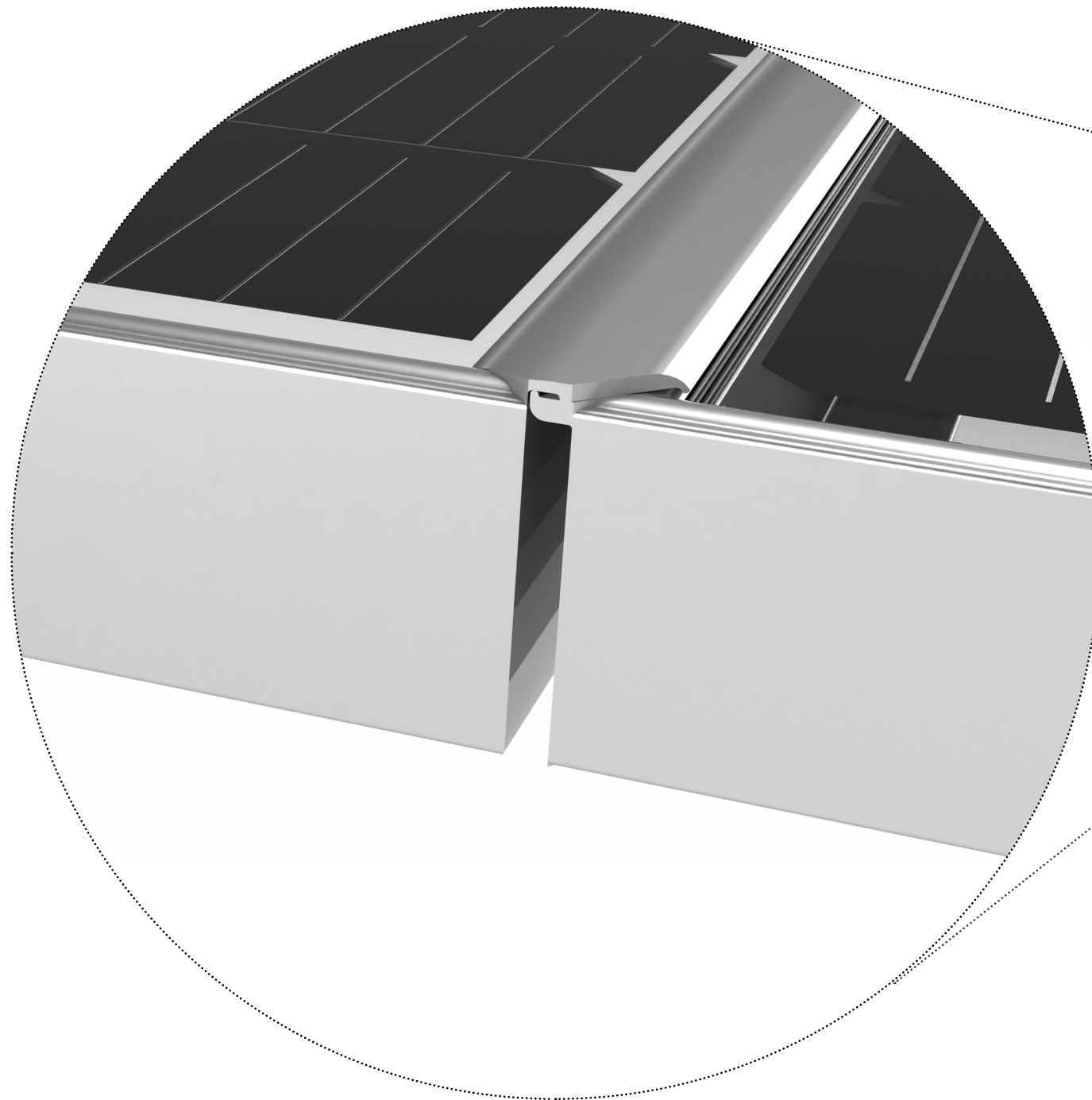
The **ClearSpan** Module System was designed from the ground up to be the best solar module solution for parking deck and carport applications. The unique shingled frames of our **CSX** modules with the **ClearSpan** Rail create an ultra durable waterproof array that is built to last.

- Waterproof
- Integrated gutter
- Integrated wireway
- Concealed conductors
- Bifacial modules
- Ultra durable glass glass construction

# Module Overview

The backbone of the **ClearSpan** Module system is the unique shingled frames of the **CSX** Modules and the **ClearSpan** Rail which is a gutter, wireway and mounting rail in one super clean aluminum profile. The entire system is fastened using flange nuts and bolts through predrilled holes in all components for super fast and secure installation.

**ClearSpan** was designed, engineered, and manufactured to perform all day, every day.

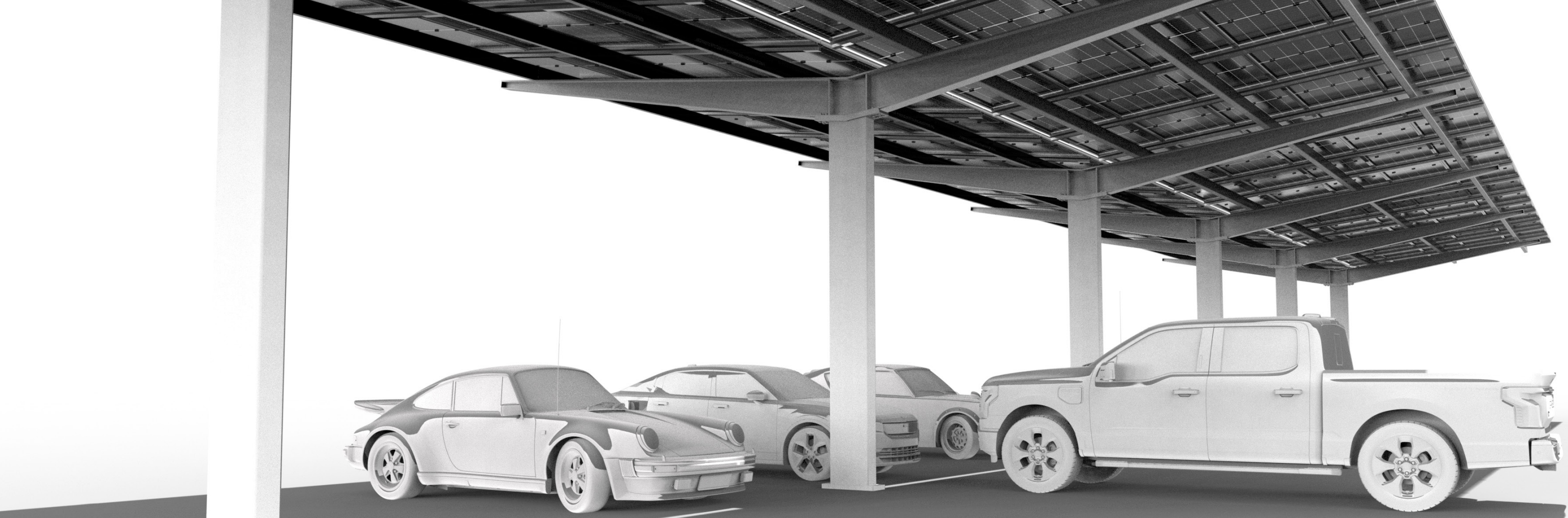




## Parking Deck

Parking decks are the low hanging fruit for overhead solar applications. They are ideal locations for solar since they make the most out of valuable real estate, do not require costly foundations and convert the top level of a parking deck into an energy producing asset and with the **ClearSpan** Module System provide users waterproof, covered parking.

- Integrated gutters
- Surface mounted LED lighting
- Galvanized steel finish



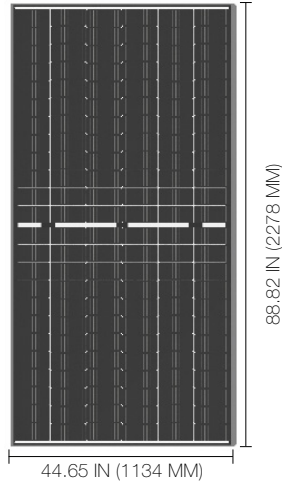
## Carport

The **ClearSpan** Module System is the perfect solution to create super clean, shady, waterproof solar carports. If you are looking for a streamlined solution that is built to stand the test of time.

- Integrated gutters
- Surface mounted LED lighting
- Galvanized steel finish

# Module Specifications

TEMPERATURE COEFFICIENTS	
NOMINAL OPERATING CELL TEMPERATURE (NOCT)	45±2°C
POWER TEMPERATURE COEFFICIENT (PMPP)	- 0.32% / °C
VOLTAGE TEMPERATURE COEFFICIENT (VOC)	- 0.27% / °C
CURRENT TEMPERATURE COEFFICIENT (ISC)	+ 0.048% / °C



**CSX 555**

**LUMOS**  
powered by **VSUN**

**TIER 1**  
Bloomberg  
New ENERGY FINANCE



CELLS	144
POWER	550W
PEAK POWER VOLTAGE (VMP)	42.00 V
MAXIMUM POWER CURRENT (IMP)	13.10 A
OPEN CIRCUIT VOLTAGE (VOC)	49.92 V
SHORT CIRCUIT CURRENT (ISC)	13.99 A
MODULE EFFICIENCY	21.29%
OPERATING TEMPERATURE	- 40°C TO + 85°C
MAXIMUM SYSTEM VOLTAGE	DC 1500V
MAXIMUM TYPE FUSE RATING	30 A
POWER TOLERANCE	- 0/+5W
SOLAR CELL	MONOCRYSTALLINE BIFACIAL 7.1" X 3.5" (182 MM X 91 MM)
CELL LAYOUT	6 X 24
MODULE DIMENSIONS	88.82 IN X 44.65 IN X 1.38 IN (2278 MM X 1134 MM X 35 MM)
MODULE AREA	27.54 FT <sup>2</sup> (2.58M <sup>2</sup> )
FRONT / BACK GLASS	2.0MM/2.00MM TOUGHENED GLASS
MODULE WEIGHT	72.09 LBS (32.7 KG)
FRAME	ANODIZED ALUMINIUM ALLOY
STATIC LOAD	MAX FRONT SIDE +400PA, MAX REAR SIDE 2400PA
OUTPUT CABLES	LEAD LENGTH 450MM STAUBLI MC4 CONNECTORS
FIRE RATING	C (IEC61730)
CERTIFICATIONS	UL 61730, CSA 61730, IEC 61215, IEC 61730
WARRANTY	12 YEAR PRODUCT WARRANTY / 30 YEAR LINEAR PERFORMANCE WARRANTY

