



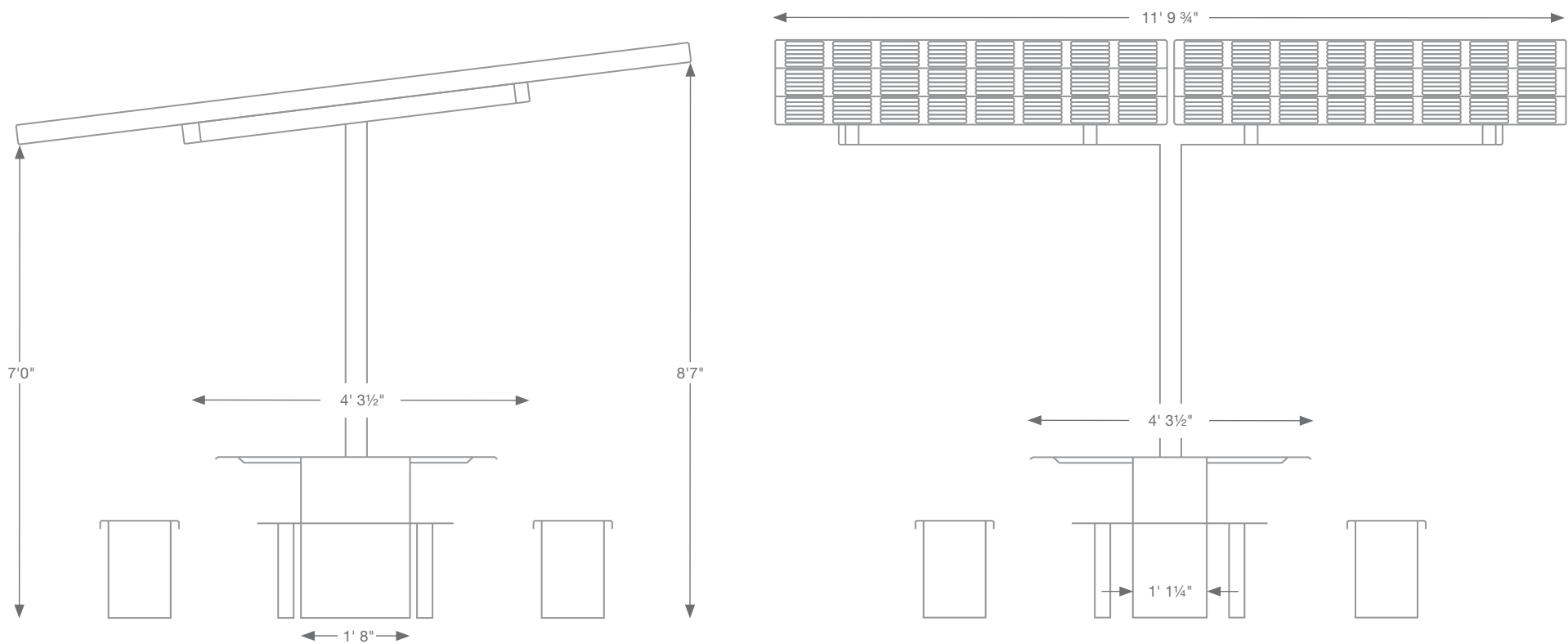
SolarZone Team

Stand alone battery based solar charging & shade structure.

System Overview

The **SolarZone** is an off-grid solar charging station and shade structure. It can be installed anywhere and does not require foundations or underground electrical work. Featuring Bluetooth programmable LED lighting and data monitoring, the **SolarZone** is available with optional bench seats and is ADA Compatible.

The **SolarZone** solar charging and shade table is the perfect solution for creating a comfortable and functional outdoor workspace or classroom. Ideal for outdoor spaces at universities, colleges, schools, corporate campuses, stadiums, cafes, restaurants, soccer fields, golf courses, or anywhere you need a seat in the shade and a place to get a charge!



PRODUCT FEATURES

- Meets the highest wind, snow and seismic loads
- Concealed conductors
- Concealed junction boxes
- No foundation required
- No underground electrical
- Bolt together assembly & pre-wired

MATERIAL & FINISH

- Powder coated steel construction
- CNC milled for precision fit
- ADA compliant

ELECTRICAL COMPONENTS

- (4) Wireless chargers for mobile devices
- (4) 110v weatherproof outlets with USB A and C
- Integrated LED lighting
- Bluetooth data monitoring and controls

TECHNICAL DETAILS

Solar Capacity:	1710W
Nominal battery capacity:	2,040 Wh (12V, 170Ah)
Allowable depth of discharge:	50%
Battery chemistry:	AGM
Maximum continuous load (77°F):	800W

COVERAGE

- 30 year warranty on Lumos Vision Modules
- 5 year warranty on electrical components
- 2 year warranty on batteries
- 1 year warranty on **SolarZone** finish

System Details

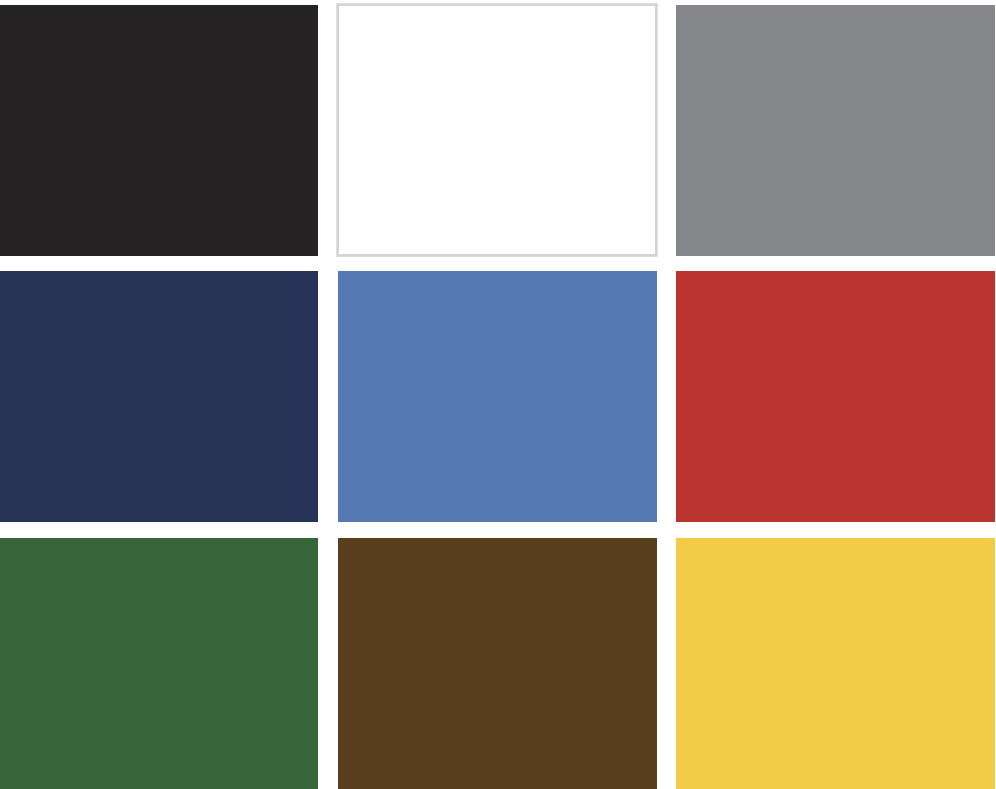
With it's clean, timeless design, precision construction and best in class components, the **SolarZone** is built to last.

CONSTRUCTION



- Powder coated steel construction
- All components CNC milled for precision fit
- All welds completed by certified welders

CUSTOMIZATION



- SolarZones are primed and powder coated with a minimum coating thickness of 10mil and maximum of 15mil
- Coatings tested per ASTM D3451 guidelines
- (9) standard Puroplaz colors and custom colors available

LIGHTING



- Integrated outdoor rated LED lighting
- Bluetooth lighting controls