



LUMOS

The
clear
choice

Who we are

Lumos Solar was founded in 2006 with the mission of helping solar become a mainstream energy source. We saw a need in the market for solar products that were highly functional, efficient, and also beautiful. We take a systems approach to design, thinking about how our products will be installed and used. Our systems approach to product design ensures that all products work together seamlessly to achieve the best aesthetics and functionality.

“When I am working on a problem, I never think about beauty, but when I have finished, if the solution is not beautiful, I know it is wrong.”

Buckminster Fuller

Our proprietary architectural solar products are designed and manufactured to our specifications. We use the highest quality components and state-of-the-art US manufacturing to create the most beautiful, durable and functional solar products available.



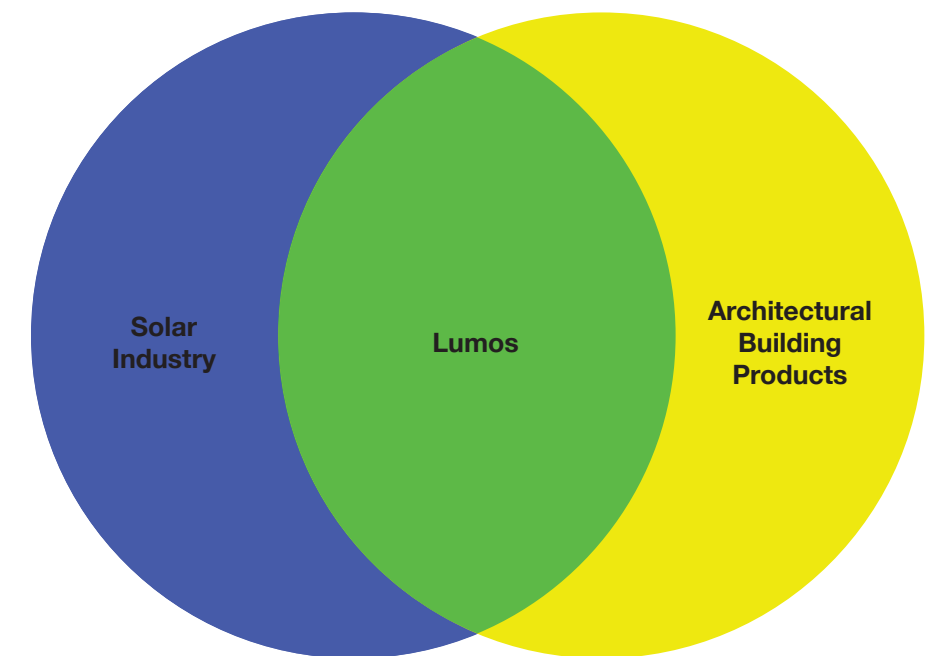


What we do

Lumos Solar produces architectural solar products and provides design and engineering support to allow design professionals and installers to easily integrate solar into new and existing buildings.

Helping take projects from concept to installation is our specialty and we have an unparalleled track record of successful project completion.

Our solutions are unique and occupy a space where the solar industry and architectural building products overlap.



Our network of over 300 Lumos Authorized Professionals allows us to get our world class solutions installed anywhere. For larger, more complex projects, we can manage the installation directly to help streamline the process and ensure project success. We can also provide project financing for qualified projects.

We are here to help make your solar dreams come true.



LSX Module System

The LSX Module System is the original frameless module system and is still the most versatile and durable solution available. With it's unique through-bolt mounting system and integrated wireway, the LSX Module System can help bring even the most demanding solar projects to life.

APPLICATIONS

- Carports
- Canopies
- Curtain Walls
- Facades
- Awnings

FEATURES & BENEFITS

FRAMELESS INFINITY EDGE GLASS™

- PID free
- Continuous glass surface

GLASS / BACKSHEET CONSTRUCTION

- Class 4 Hail Rating
- Highest wind speed rating
- Highest snow load rating

ENVIRONMENTALLY FRIENDLY FINISH

- Unlimited color options
- Powder Coat finish for aluminum rails

INTEGRATED WIREWAY

- Concealed junction boxes
- Concealed conductors

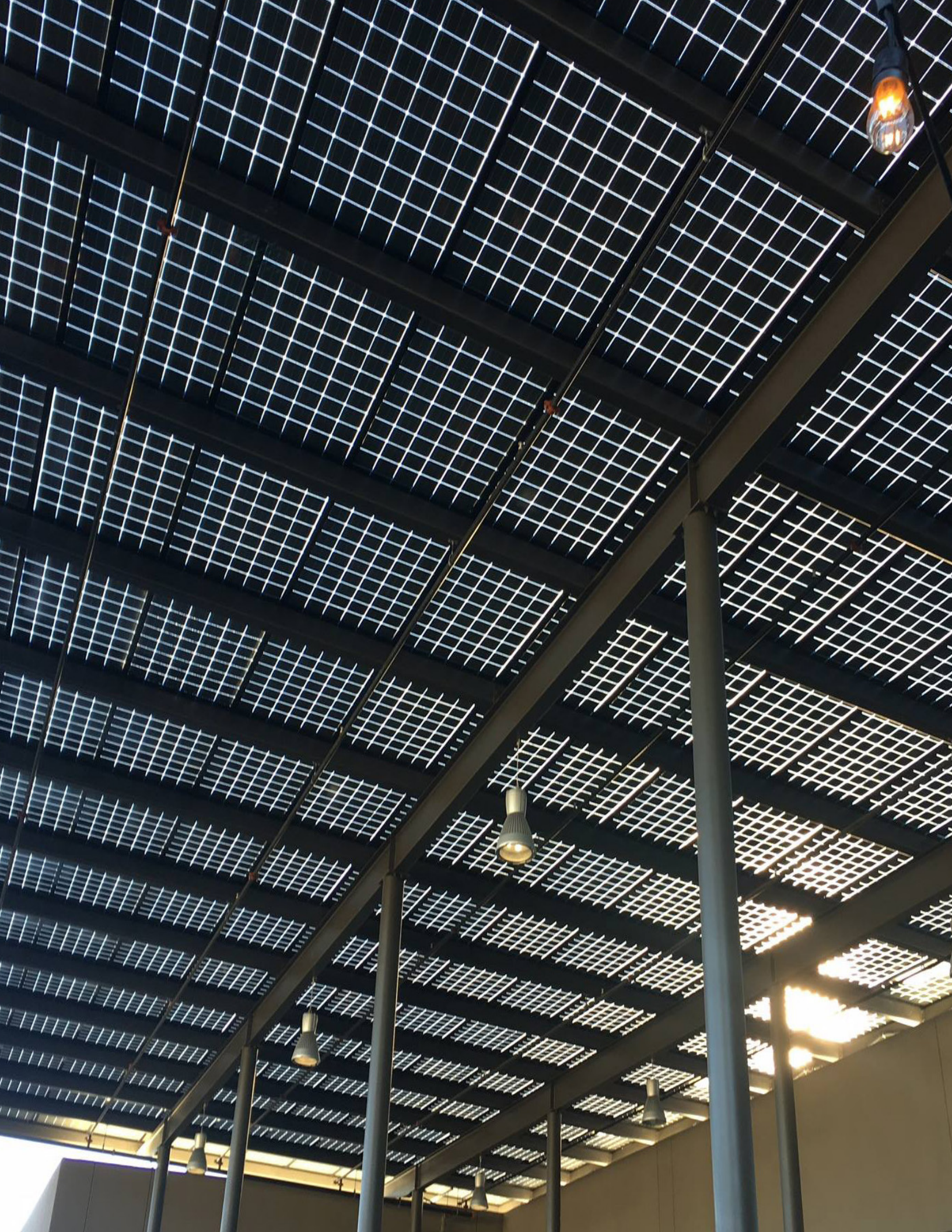
THROUGH-BOLT MOUNTING SYSTEM

- Allows unlimited mounting options
- Can be weatherproofed

LIGHT TRANSMITTANCE

- 10% Landscape 12% Portrait





GSX Module System

Our GSX Module System is based on a bifacial module that produces energy from both sides for maximum production. GSX Modules are offered in a variety of cell layouts to optimize light transmittance and design flexibility. The GSX mounting system creates a continuous glass surface on the sunny side and a clean underside with all conductors and junction boxes completely concealed.

APPLICATIONS

- Carports
- Canopies
- Curtain Walls
- Facades
- Awnings

FEATURES & BENEFITS

FRAMELESS INFINITY EDGE GLASS™

- PID free
- Continuous glass surface
- Can be weatherproofed

GLASS / GLASS CONSTRUCTION

- Ultra durable
- Highest wind speed rating
- Highest snow load rating

ENVIRONMENTALLY FRIENDLY FINISH

- Unlimited color options
- Powder Coat finish for aluminum rails

INTEGRATED WIREWAY

- Concealed junction boxes
- Concealed conductors

LIGHT TRANSMITTANCE

- 4% - 62%

SolarScapes

Modular solar structures that provide shade and power with leading edge design. SolarScapes are pre-engineering and pre-fabricated and are delivered direct to job site ready to bolt together. SolarScape structures are made from CNC machined steel or aluminum depending on project requirements.

APPLICATIONS

- Carports
- Canopies
- Shade Structures
- EV Charging Stations

FEATURES & BENEFITS

PREFABRICATED

- Bolt together assembly no field welding
- Can be weatherproofed

PERMIT PACKAGE

- Wet Stamped Structural Engineering
- Foundation Drawings

MODULAR

- Unlimited configurations to meet any project requirements
- Pre-engineered for project specific loads and codes

ALUMINUM OR STEEL CONSTRUCTION

- Concealed junction boxes
- Concealed conductors

ENVIRONMENTALLY FRIENDLY FINISH

- Unlimited color options
- Powder Coat finish for Aluminum or Steel
- Duplex Galvanized Steel/ Powder Coat finish for extreme locations



